

INSTALLATION INSTRUCTIONS



UNLEASH.

THE SMARTEST PERFORMANCE TUNING TECHNOLOGY

ZFI FUEL MANAGEMENT

**DUCATI HYPERMOTARD 939 | 2016
F1911**

1 > READ

WARNINGS > INSTALLING



- We strongly suggest that an experienced technician install this product.
- Read through all instructions before beginning installation.
- This document is intended for use by qualified technicians.
- This is not a replacement for the factory Engine Control Unit (ECU).
- Refer to a factory service manual for more specific stock component identification/location information and removal/assembly procedures.

WARNINGS > USING



- Use only in race or other closed-course applications and never on public roads.
- Z-Fi products are not certified by the California Air Resource Board (CARB) for use on CA highways.

GETTING HELP



- Factory support is available in the US at 909-597-8300.
- For fastest support outside of the US, find your local importer at bazzaz.net.

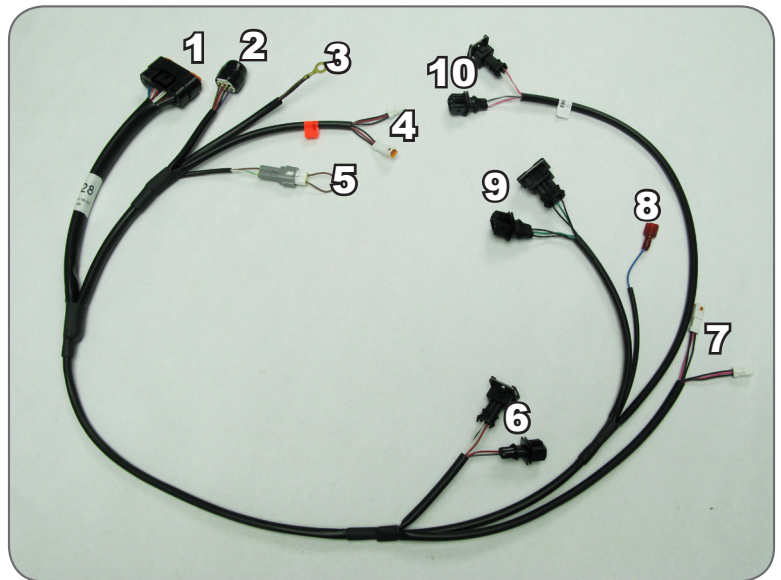
2>IDENTIFY

INCLUDED PARTS

1. Z-Fi control unit
2. Fuel harness
3. Scotchlok (1)
4. USB cable
5. Swingarm stickers
6. Velcro
7. Download Bazzaz software from bazzaz.net/index.php/software-overview

FUEL HARNESS

1. Main
2. ZAFM
3. Ground
4. +12v SW Power
5. Map Select
6. Rear Injector
7. Gear
8. TPS
9. CKPS
10. Front Injector



3>REMOVE

*****DO NOT DISCONNECT THE FACTORY ECU DURING THE INSTALLATION*****

1. Rider seat.
2. Left and right side fairing.
3. Fuel tank.

4>SECURE

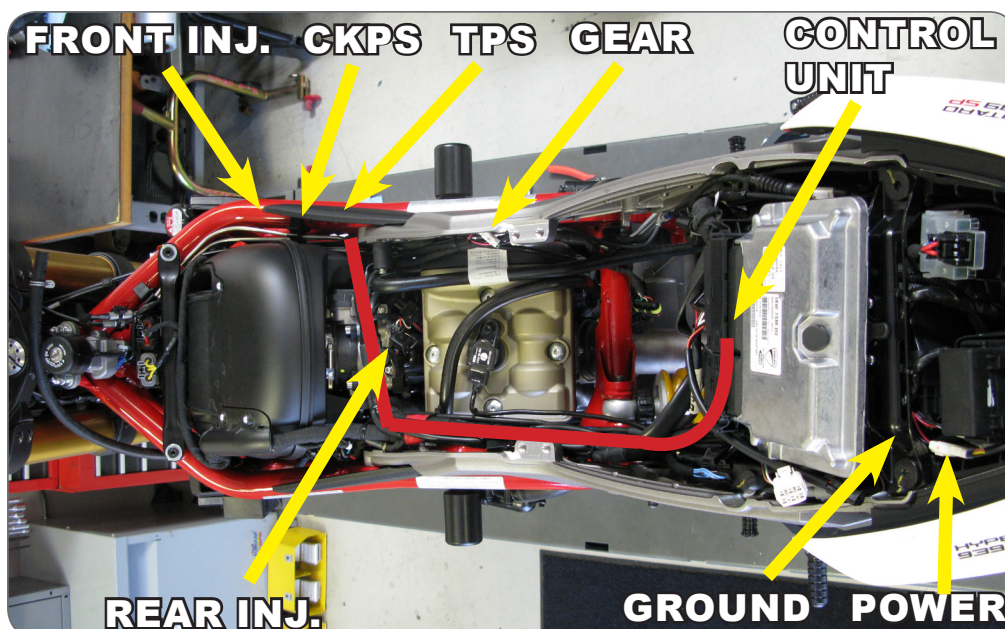
1. The Bazzaz control unit will be on top of the factory ECU beneath the rider seat.



5>CONNECT

5.1

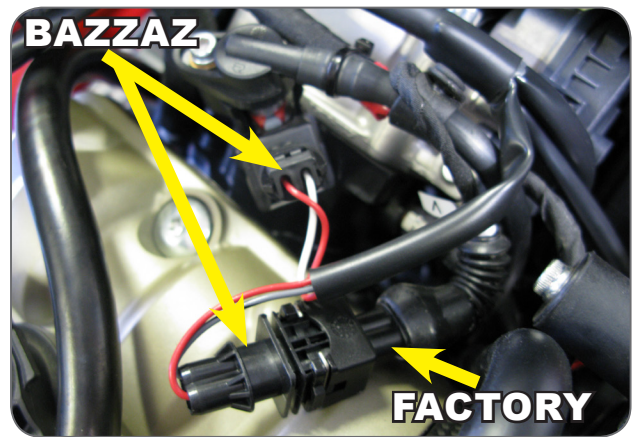
1. Connect the Bazzaz fuel harness and begin to route the harness towards the air box along the left hand side of the bike as shown in the picture below.



5>CONNECT

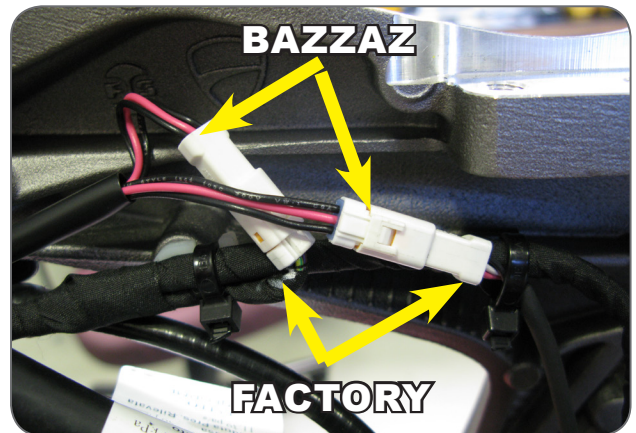
5.2

1. Locate the factory rear injector connector which can be found at the rear of the air box.
2. Carefully disconnect the factory injector connector and install the Bazzaz rear



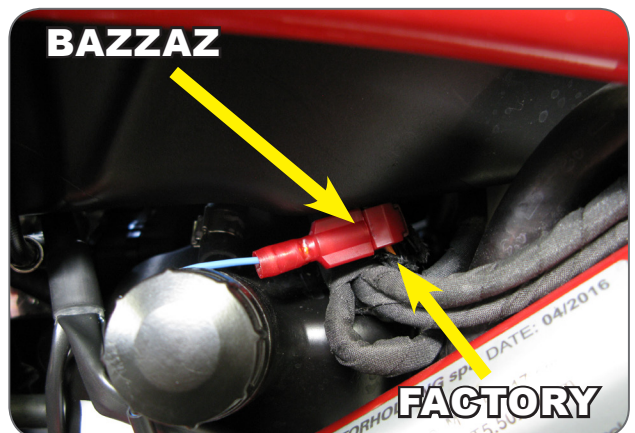
5.3

1. Locate the factory small white gear position connector which can be found on the right hand side of the bike.
2. Disconnect the factory gear position connectors and install the Bazzaz GPS connectors inline.



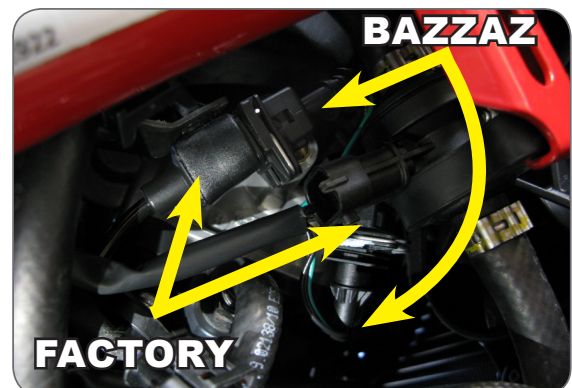
5.4

1. Locate the factory TPS lead which can be found beneath the airbox on the right hand side of the bike.
2. Carefully make a small cut into the factory sheathing to expose the factory wires. Once the wires are exposed separate the factory orange/brown wire. Using the supplied scotchlok crimp onto the factory orange/brown and connect the Bazzaz TPS connector.



5.5

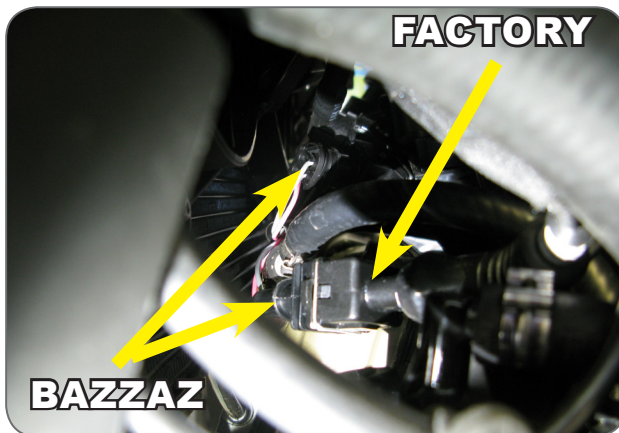
1. Locate the factory CKPS connectors which can be found rubber mounted to the frame on the right hand side of the bike.
2. Disconnect the factory CKPS connectors and install the Bazzaz CKPS connectors inline.



5>CONNECT (CONT.)

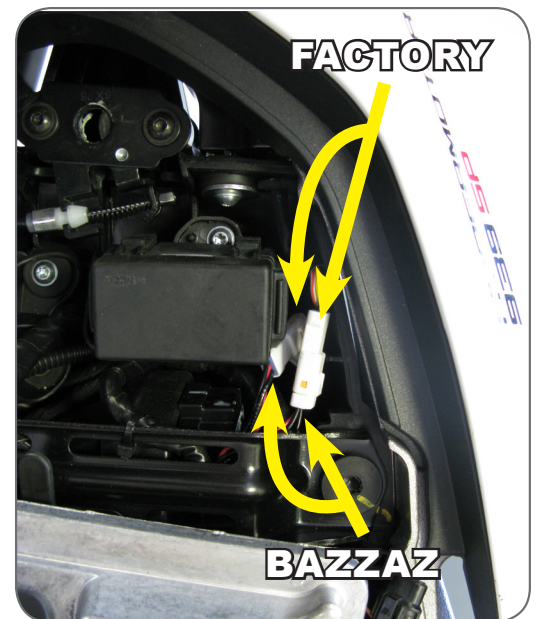
5.6

1. Locate the factory front injector connector which can be found on top of the front cylinder near the radiator.
2. Carefully disconnect the factory injector connector and install the Bazzaz injector connectors inline. (To ease in the installation you may loosen the radiator to create more space).



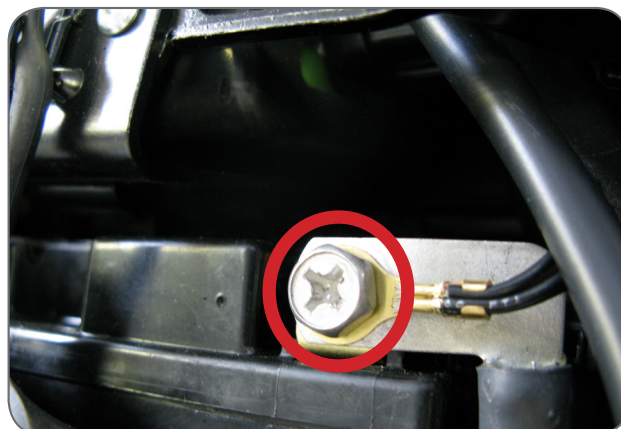
5.7

1. Locate the white tail light connector in the tail section of the bike.
2. Disconnect the factory tail light connector and install the Bazzaz switched power connector inline.



5.8

1. Locate the factory negative battery terminal and install the Bazzaz ground lug.



6>CHECK



1. In order to check that the system is installed correctly, download the Bazzaz Z-Fi Mapper software at bazzaz.net.
2. Plug the USB cable into the control unit and computer.
3. Locate and open the Z-Fi Mapper software.
4. Check that the pre-programmed map matches the model of your bike on the fuel map page within the software. You can switch from map 1 to map 2 by unplugging the map select jumper on the Bazzaz fuel harness. Map 1 will be pre-programmed; depending on your model, there may be a pre-programmed map in the map 2 slot. If map 2 is blank, stock ECU settings are used. Make sure that the jumper is left plugged in or unplugged, depending on which map you choose.
5. Start the vehicle and begin to check that the following inputs read correctly on the fuel map page.
 - RPM - Make sure that the RPM is reading near what the vehicle is idling at.
 - GPS - The vehicle should read neutral (or whichever gear it is in). For motorcycles that use a Gear Position Sensor, the bike does not need to be running to do this. For motorcycles that use a speed sensor, the wheel must be spinning to read gear properly. This can be checked on a dynamometer or by using a rear stand. Use caution when testing componentry.
 - TPS - When throttle is applied, the TPS should read accordingly. Fly-by-wire models must be running to check TPS. Normal cable operated throttles can be checked with just the key on, not running.

Also use software to:

- View and/or make adjustments to fuel maps
- Activate Z-AFM self mapper (sold separately)
- Save and load new fuel maps
- Re-calibrate throttle position sensor after throttle modifications
- View diagnostics for troubleshooting
- Change quickshift settings
- Make traction control adjustments



If any problem is found, please carefully follow through the installation steps again.



If problem still persists, please contact Bazzaz tech support

- Factory support is available in the US at 909-597-8300.
- For fastest support outside of the US, find your local importer at bazzaz.net

7> REINSTALL

After it is determined that everything is correct, reinstall the components removed in step 3.

8> USE

MAPS

The Bazzaz controller is capable of storing two maps. You may switch maps by connecting or disconnecting the map select jumper supplied with the kit.

Or use the optional handlebar-mounted switch to switch maps on the fly (sold separately).



MAP 1



MAP 2

9> NEXT LEVEL

SELF MAPPER

Build race-level fuel maps for your specific modifications, fuel type, engine, and atmospheric conditions simply while riding. O2 sensor mounts into exhaust and control box easily plugs in to any Bazzaz Z-Fi product.



299.95

MAP SELECT SWITCH

Switch maps on the fly with this handlebar-mounted switch. Weatherproof toggle and easy installation.



79.95



THE SMARTEST PERFORMANCE TUNING TECHNOLOGY



Proudly made in the
United States

F1911